

# 135 Acre Farm

9012 Geisbert Road | Woodsboro | MD | 21798

**VCRE.CO**



**135 acre farmland with several improvements, captivating panoramic views capturing the open pasture, the flowing stream and beautiful views of the mountains. Offered at \$1,150,000.**



Office: 240.367.9600 | Fax: 240.668.6822 | 1845 Brookfield Ct. | Frederick, MD 21701

**Tony "C" Checchia**

301.471.8669 (Tony) mobile

TonyC@vcre.co

**240.367.9600**



# 135 Acre Farm

9012 Geisbert Road | Woodsboro | MD | 21798

VCRE.CO

## 135 Acre Farm

Several improvements on this beautiful 135 acre lot

- ♦ 2 Bedroom Farmhouse
- ♦ Barn\Shed(s)/Out Buildings
- ♦ Large Detached Garage
- ♦ Zoned Agricultural
- ♦ Offered at \$1,150,000



# 135 Acre Farm

9012 Geisbert Road | Woodsboro | MD | 21798

VCRE.CO

## Zoning



Disclaimer: Information obtained from sources deemed to be reliable. However, we make no guarantee, warranty or representation. Information, prices, and other data may change without notice.

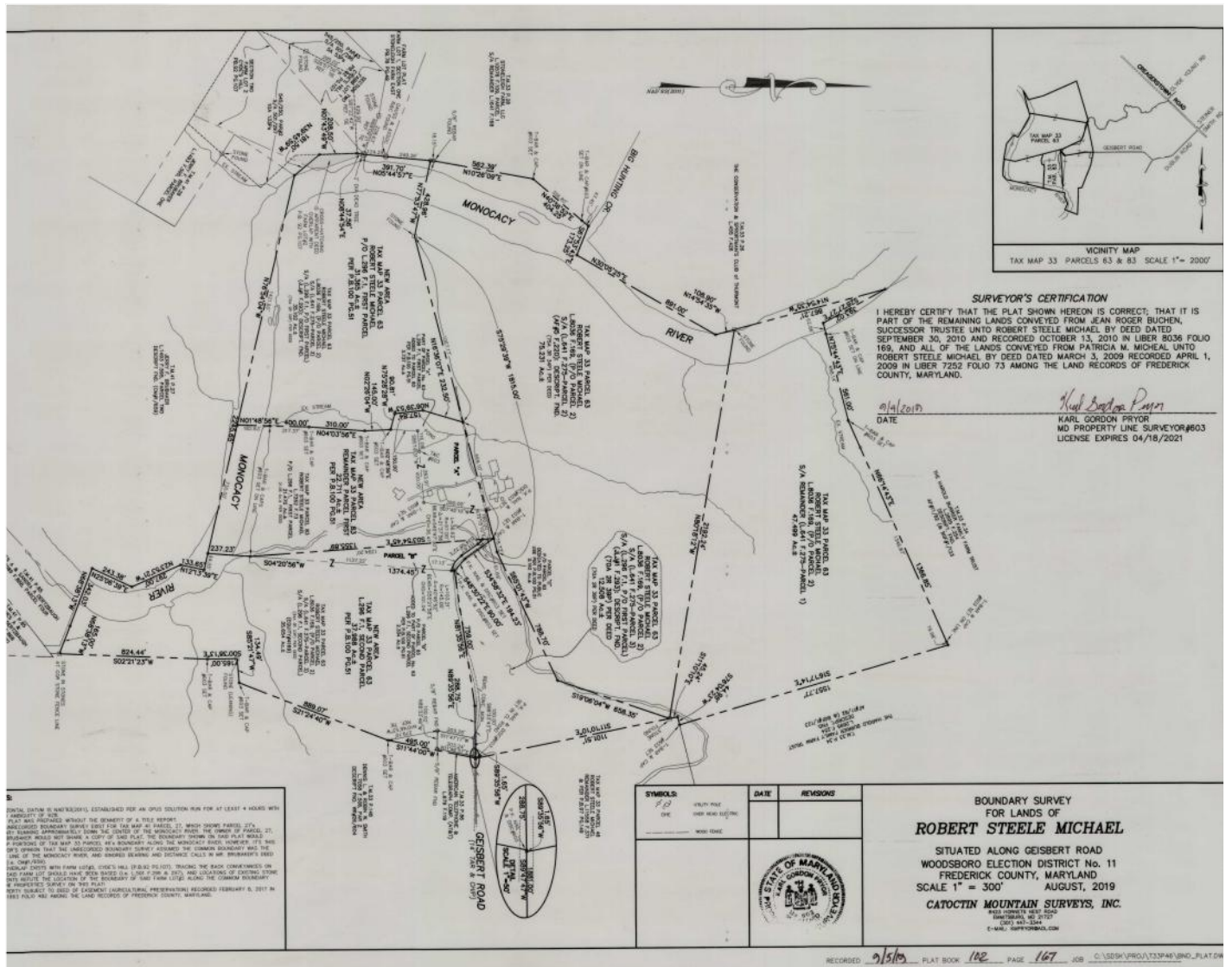


# 135 Acre Farmland

9012 Geisbert Road | Woodsboro | MD | 21798

VCRE.CO

## PLAT



Disclaimer: Information obtained from sources deemed to be reliable. However, we make no guarantee, warranty or representation. Information, prices, and other data may change without notice.



1845 Brookfield Court  
Frederick, MD 21701

Office 240.367.9600  
Cell 301.471.TONY (8669)  
vcre.co



# 135 Acre Farmland

9012 Geisbert Road | Woodsboro | MD | 21798

**VCRE.CO**

## PARCEL AERIEL



Disclaimer: Information obtained from sources deemed to be reliable. However, we make no guarantee, warranty or representation. Information, prices, and other data may change without notice.



1845 Brookfield Court  
Frederick, MD 21701

Office 240.367.9600  
Cell 301.471.TONY (8669)

[vcre.co](http://vcre.co)

