

Retail Space For Lease

VCRE.CO

190 Thomas Johnson Drive | Suite 2 | Frederick | MD



Shiraz Plaza, located at 190 Thomas Johnson Drive, presents a new retail opportunity in thriving Frederick County less than a mile of US 15. The contemporary style architecture features an attractive brick and stone facade with lush landscaping and expansive store fronts boasting floor to ceiling windows. Clean, modern, and open floor plan. This 1,250 SF unit features beautiful hardwood floors, a private bathroom and plenty of parking. Excellent highway visibility. Shiraz Plaza offers retailers, restaurants, and personal services a prime location. Zoned GC and suited for many uses. Offered at \$2,600 monthly plus utilities.



Office: 240.367.9600 | Fax: 240.668.6822 | 50 Citizens Way, Suite 203 | Frederick, MD 21701

Tony C. Owner / Broker

301.471-8669

TonyC@vcre.co



240.367.9600

190 Thomas Johnson Drive

Suite 2 | Frederick | MD | 21701

VCRE.CO



50 Citizens Way
Suite 203
Frederick, MD 21701

Office 240.367.9600
Cell 301.471.8669
TonyC@VCRE.CO



Presenting

- ◆ **Easy Access From Major Highways**
- ◆ **Close to High Density Residential**
- ◆ **Excellent Visibility**
- ◆ **Signage Available**
- ◆ **Storefront Retail**
- ◆ **Zoning: GC—General Commercial**
- ◆ **Rental Size: 1,250 sq. ft.**
- ◆ **Property Type: Commercial**
- ◆ **Year Built: 2017 (New)**
- ◆ **Water: Public**
- ◆ **Sewer: Public**
- ◆ **Price: \$2,600 Monthly - Plus Utilities**

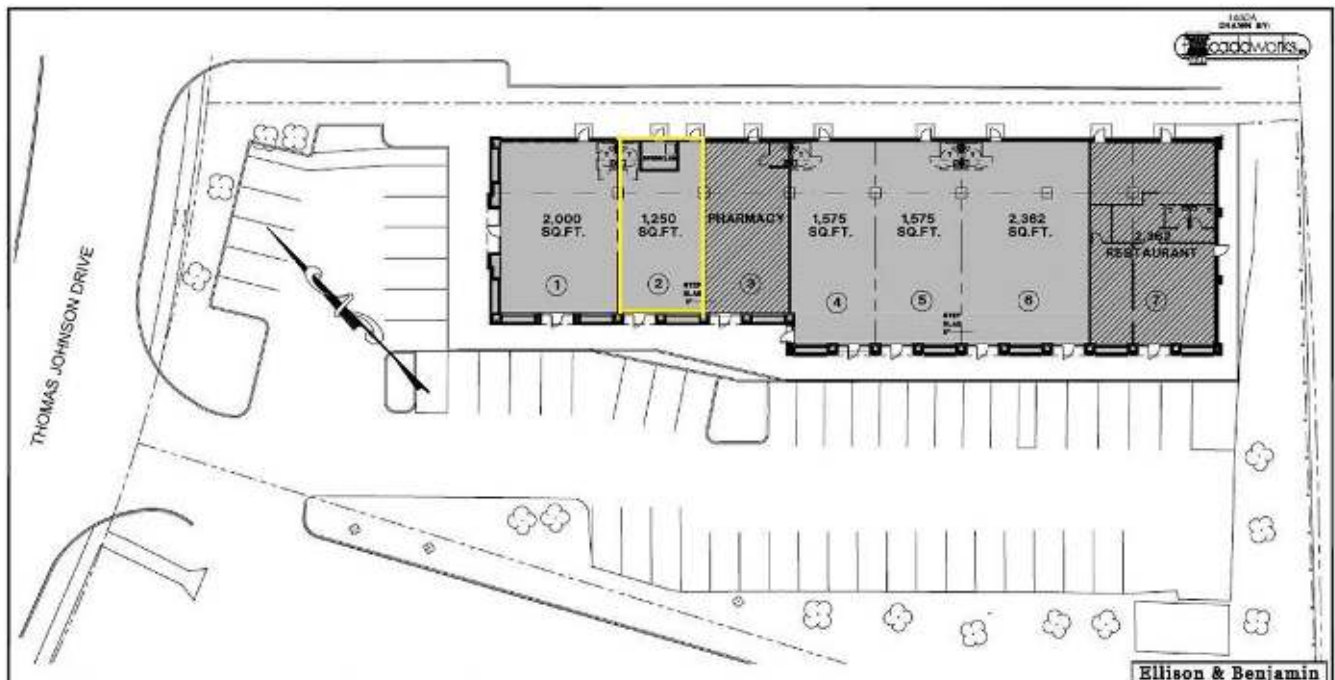
Disclaimer: Information obtained from sources deemed to be reliable. However, we make no guarantee, warranty or representation. Information, prices, and other data may change without notice.

190 Thomas Johnson Drive

Suite 2 | Frederick | MD | 21701

VCRE.CO

Location Highlights & Floor Plan



50 Citizens Way
Suite 203
Frederick, MD 21701

Office 240.367.9600
Cell 301.471.8669
Tonymc@VCRE.CO

